

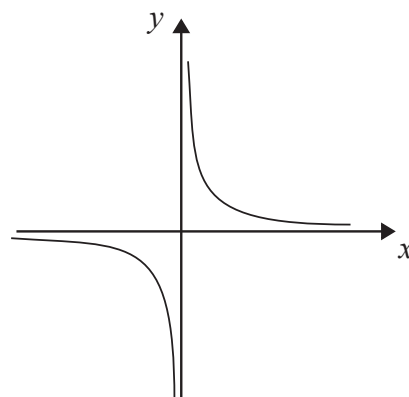
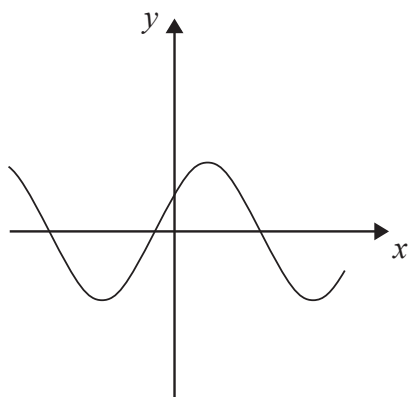
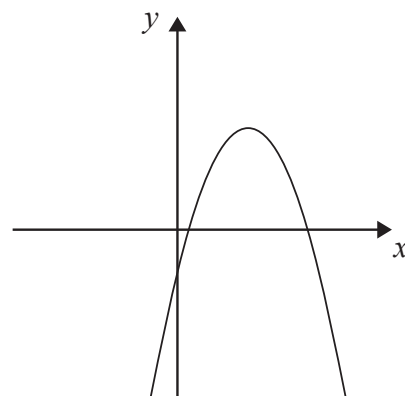
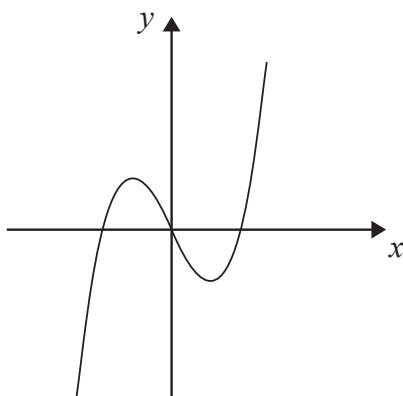
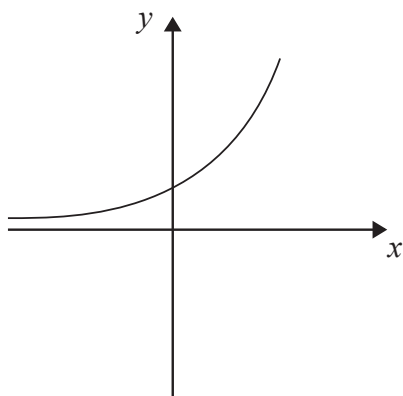
Level 3 Algebra · Graphs - Recognising

Jan 2014 - Question 6

Jan 2016 - Question 16

June 2023 - Question 15

6 Here are some graphs of functions.



Here is a list of words that can be used to describe these graphs.

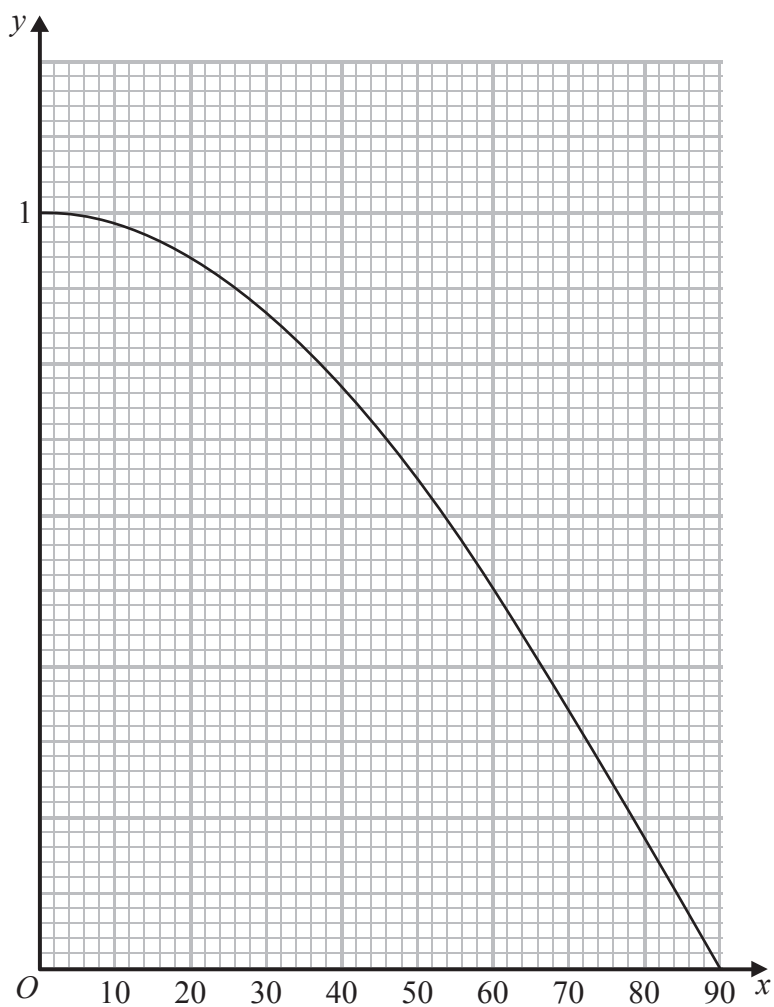
circular cubic exponential quadratic reciprocal

On the dotted line under each graph write the word from the list that can be used to describe the graph.

(Total for Question 6 is 3 marks)



16 Here is the graph of $y = \cos x^\circ$ for $0 \leq x \leq 90$



- (i) On the graph, draw the tangent to the curve at the point where $x = 30$
Label the tangent T.
- (ii) On the graph, draw the normal to the curve at the point where $x = 30$
Label the normal N.

(Total for Question 16 is 2 marks)

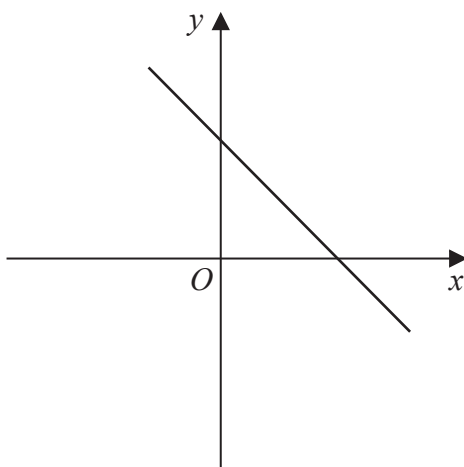
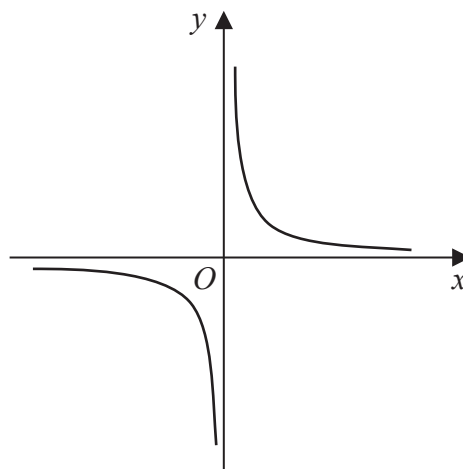
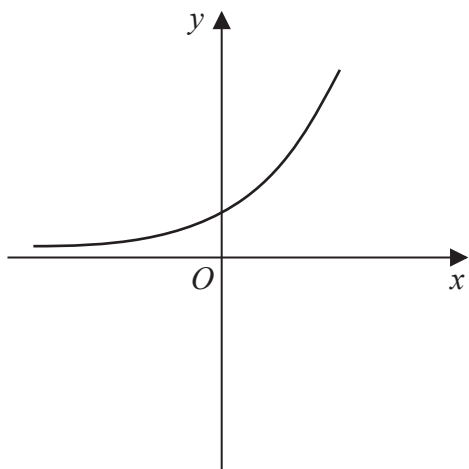
DO NOT WRITE IN THIS AREA

DO NOT WRITE IN THIS AREA

DO NOT WRITE IN THIS AREA



15 Here are three graphs.



Here is a list of words.

- circular linear exponential quadratic reciprocal

On the dotted line under each graph write the word from the list that can be used to describe the graph.

(Total for Question 15 is 3 marks)

